

MCT Phone Accounting (PA)

Indispensable IP Communication Tracking & Management Tool

MCT PA provides complete log, various statistic and cost report of enterprise telecommunication activities by integration of Call Detail Record (CDR) of IP PBX . It supports integration with multiple IP PBX clusters at multiple sites with multiple fee tables. It enables enterprise management to track and analyze telecommunication activities and expenses for management purpose. It supports web based tool for administrator to configure and manage it. It is an indispensable management tool for enterprise.

Benefits

1. Track and Analyze enterprise telecom activities to enhance enterprise management.
2. Assess the performance and cost reduction by IP communication.

Main Functions & Differentiation

1. Support tracking telecom activities by extension, direct line, IDD, long distance, local and mobile call.
2. Support multiple IP PBX clusters in multiple locations.
3. Supports multiple telecom fee tables.
4. Support partition feature to generate separated reports for multiple companies in one IP PBX.
5. Support integration and authentication of LDAP including MS Active Directory, Lotus Domino and Open LDAP.
6. Support generation reports by real time, schedule or manual.
7. Support report online browsing, printing, exporting to CSV file and send to designated email.
8. Support detail and summary reports including journal, ledger, call volume, expenses ... etc.
9. Support clean of records in a certain period automatically by preset schedule or by manual.
10. Support user authentication, password protection and authority management.
11. Support web based management interface.

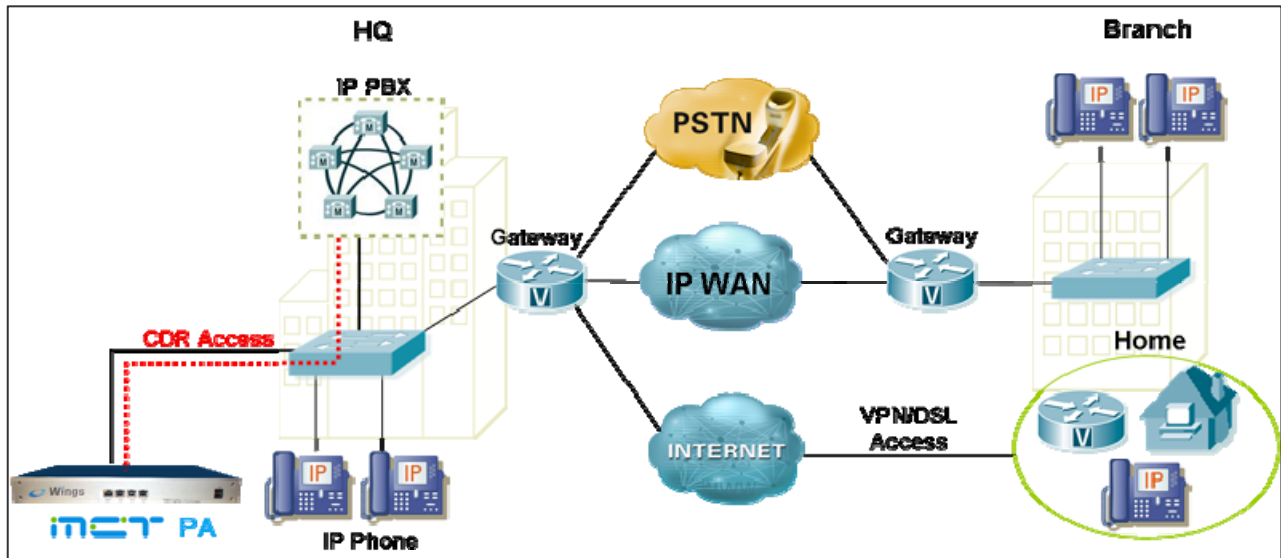
Management Interface

The screenshot displays the MCT Phone Accounting (PA) management interface. The top navigation bar includes System, User/Extension, Report, Tools, Help, Q&A, System Environment, and Logout. The main content area is divided into several sections:

- Report Section:** Includes a dropdown menu for 'Report' with options like 'Detail Report', 'Summary Reports', 'Particular Reports', 'Report Download', 'Re-Calculate Cost', and 'System Log'. Below this are search filters for 'Level', 'Caller', 'Called', 'Employee No.', and 'Trunk', each with a dropdown menu and a 'Generate Report' button.
- System Parameters Section:** Contains configuration fields for 'System Version' (eWings Phone Accounting 2.1.0), 'Company Name' (mobile cloud), 'System Language' (English), 'Decimal Place' (2), 'Rows per Page' (250), and checkboxes for 'Display Incoming Calls', 'Display Internal Calls', 'Display Call Duration Is Zero', and 'Display Exceptional Calls'. It also includes 'Abnormal Call Duration Check' (25000 seconds) and 'Maximum Number of Customized Report in System' (20).
- External Database Section:** Features a 'Primary User Field' dropdown (Employee No.), and checkboxes for 'Delete in System Directly' and 'If level has been deleted in LDAP'.
- Schedule Report Configuration Section:** Includes a 'Schedule Tasks' dropdown (Disable) and a grid of checkboxes for various report types: 'Extension Detail', 'Trunk Detail', 'Single Level Summary', 'Call Type Summary', 'Authorization Code Detail', 'All Calls', 'Multi-level Summary', 'Multi-level Dial Pattern Summary', 'Department Ext Detail', 'Enterprise Units Call Summary', and 'Single Level IDD With Account Code'.

At the bottom left, a table displays call records with columns: Caller, Called, Device Name, Office/Location, Business Unit, and Department. The table contains several rows of data, such as 4402 80174001 004 系統代碼.

Deployment Architecture



System Specification

1. Support Cisco, Avaya and Nortel IP PBX.
2. Standard server supports up to 1000 IP phones for phone accounting application.
3. Higher capacity and performance requires more powerful server.
4. Support HA and distributed deployment of system modules for large UC system.
5. Support Linux OS.